



the **play inspection** company
the safest hands around playgrounds

Post Installation Report

Leicestershire County Council

Charlton Parish Council - Toddlers Play Area

Nailstone Road, Carlton, Nr Market Bosworth, Leicestershire,
CV13 0DH



Rivers Lea House, 14 Ringwood Road, Longham, Ferndown, Dorset BH22 9AN

t - 01202 590675 f - 0870 428 3942 e - info@playinspections.co.uk

www.playinspections.co.uk

Powered by:

the play ▶
inspection app

by the play inspection company

Risk Assessment Matrix

Probability>>	5	Very High	VL	L	M	H	VH
	4	High	VL	L	M	H	H
	3	Moderate	VL	L	L	M	M
	2	Low	VL	L	L	L	L
	1	Very Low	VL	VL	VL	VL	VL
		Very Low	Low	Moderate	High	Very High	
		1	2	3	4	5	

Severity>>

Probability Score	Probability of Occurrence
1 – Very Low	No significant probability; lightning Strike
2 – Low	Minimal probability of occurrence. Requires significant factor or combination of factors to take place. Significant increase in intensity of use.
3 – Moderate	Moderate probability. An added factor is needed to cause an accident. Designed use is unlikely to be problematic, additional factor is required. Covers or guards loose, removed or vandalised. Absent guard rail or barrier at high levels
4 – High	High probability. Accident is probable without any added factor. Glass contaminant in loose fill surface. Exposed sharp edges on equipment.
5 – Very High	Very High probability. If the situation is not addressed an accident is almost certain. Severely worn chains/shackles. Severely damaged surfacing within impact area

Severity Score	Severity of injury
1 – Very Low	No injury likely e.g. damaged or soiled clothing, minor bruising
2 – Low	Minor injury – Laceration or bruising requiring first aid only
3 – Moderate	Injury requiring medical intervention e.g. laceration requiring stitches, sprain, fracture of small bones of hand or foot.
4 – High	Serious injury including hospitalisation for observation e.g. concussion, fracture of long bones of leg/arm, back/neck injuries, fractured skull.
5 – Very High	Severe injury involving the potential for permanent disability e.g. amputation, loss of sight, spinal injury, fatality.

NB: When we inspect we only see a snapshot of the current condition of the equipment. It is the operator's responsibility to ensure that there is a continuing level of maintenance to keep the equipment in good working order and the site fit for use.

BS EN 1176:2008 Parts 1-11 (Playground equipment and surfacing)
 BS EN 14974 (Facilities for users of roller sports equipment)
 BS EN 15312 (Free access multi-sports equipment)
 BS 10075 (Specification for Parkour Equipment)

Site Information

Inspection Ref: 164472

Site Ref: 25495

Customer Order No: None

Post Installation Report - 13 July 2015 at 16:58 Inspector: Kevin Joyce RPII Annual Inspector

Risk Assessment: **12 - Moderate Risk**



Location: The site is located in an area of public open space and is not directly overlooked by any properties in the local community.

Disabled Access: Accessible – an area totally accessible to those with severe disability, who with the help if necessary, seek purpose to access the area.



4 - Very Low Risk

Item: Ancillary Items - Sign
Manufacturer: Not Identified
Surface Type: N/A
Equipment Compliance: N/A
Surface Area Compliance: N/A
Ref/Part Number:
Total Findings: 1



Finding 1

This item is satisfactory - no work required



8 - Low Risk

Item: Ancillary Items - Picnic Table
Manufacturer: Not Identified
Surface Type: N/A
Equipment Compliance: N/A
Surface Area Compliance: N/A
Ref/Part Number:
Total Findings: 1



Finding 1

There are potential crush points due to the fact the seat sections of this item are liftable - Consider securing the seat slats to the framework to prevent them being lifted



12 - Moderate Risk

Item: Ancillary Items - Site General
Manufacturer: Not Applicable
Surface Type: All Weather Surface
Equipment Compliance: N/A
Surface Area Compliance: N/A
Ref/Part Number:
Total Findings: 2



Finding 1

At the time of the inspection temporary fencing including road pins were delineating the play area - Ensure the road pins and fencing are removed before allowing public access

Finding 2

There are trip hazards at the edges of the impact absorbing surface - Reinststate surrounding surface levels to remove the trip points



6 - Low Risk

Item: Swings - 1 Bay Mixed Seat, 1 Cradle, 1 Flat
Manufacturer: Wicksteed Playscapes
Surface Type: Bark Mulch
Equipment Compliance: Yes
Surface Area Compliance: Yes
Ref/Part Number:
Total Findings: 2



Finding 1

The use of mixed seats in one bay is not generally recommended but in some circumstances can be justified using risk assessment considering the type and number of users anticipated in the area - Ensure a suitable and sufficient risk assessment has been undertaken

Finding 2

The swing seats do not sit in a straight line underneath the top bar. The cradle seat is angled inwards - Although the required spaces between the seats and the seats to frame are maintained through out the arc of swing it is felt the issue should be addressed. Refer to manufacturer



5 - Very Low Risk

Item: Activity Equipment - Multi Play (Junior)
Manufacturer: Wicksteed Playscapes
Surface Type: Bark Mulch
Equipment Compliance: No
Surface Area Compliance: Yes
Ref/Part Number:
Total Findings: 3



Finding 1

The item has a potential head and neck entrapment in the top spacing of the climbing net. The height of the lower edge of the top rope is 600mm but when the bark settles the entrapment will be above that height - Remove the entrapment

Finding 2



There are finger entrapments in the shackles of the rope bridge and the item fails to meet the requirements of BS EN 1176:2008 Part 1 4.2.7.6 Entrapment of fingers - Remove the entrapments

Finding 3

There is a potential finger entrapment at the top of the angled climber. Although the entrapment sits below the height of 1m it may well pose an issue given the angled climber may in some instances require use of the hands to negotiate - Consider removing this potential point of entrapment

Findings Information

i 8 - Low Risk (Finding 1)			
Item:	Ancillary Items - Picnic Table	Risk Level:	L - Low Risk
Manufacturer:	Not Identified	Surface:	N/A
		 <p style="font-size: 1.2em; font-weight: bold;">No Image Available</p>	
Finding:	There are potential crush points due to the fact the seat sections of this item are liftable	Action:	Consider securing the seat slats to the framework to prevent them being lifted

! 12 - Moderate Risk (Finding 1)			
Item:	Ancillary Items - Site General	Risk Level:	M - Moderate Risk
Manufacturer:	Not Applicable	Surface:	All Weather Surface
			
Finding:	At the time of the inspection temporary fencing including road pins were delineating the play area	Action:	Ensure the road pins and fencing are removed before allowing public access



8 - Low Risk (Finding 2)

Item: Ancillary Items - Site General
Manufacturer: Not Applicable

Risk Level: L - Low Risk
Surface: All Weather Surface



Finding: There are trip hazards at the edges of the impact absorbing surface

Action: Reinstate surrounding surface levels to remove the trip points



0 - Risk Assessment not Undertaken (Finding 1)

Item: Swings - 1 Bay Mixed Seat, 1 Cradle, 1 Flat
Manufacturer: Wicksteed Playscapes

Risk Level: N - Risk Assessment not Undertaken
Surface: Bark Mulch



Finding: The use of mixed seats in one bay is not generally recommended but in some circumstances can be justified using risk assessment considering the type and number of users anticipated in the area

Action: Ensure a suitable and sufficient risk assessment has been undertaken



6 - Low Risk (Finding 2)

Item: Swings - 1 Bay Mixed Seat, 1 Cradle, 1 Flat
Risk Level: L - Low Risk
Manufacturer: Wicksteed Playscapes
Surface: Bark Mulch

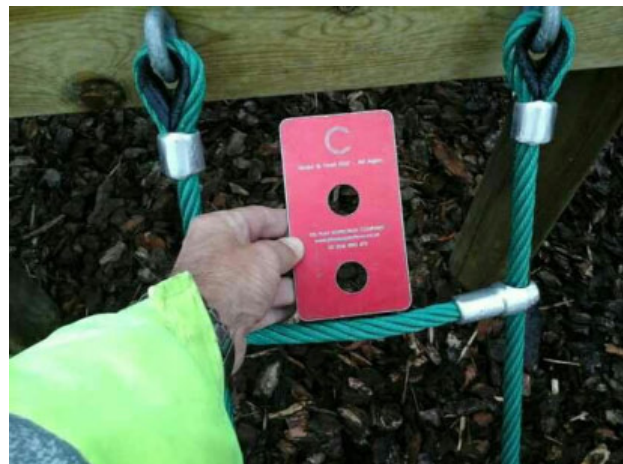


Finding: The swing seats do not sit in a straight line underneath the top bar. The cradle seat is angled inwards
Action: Although the required spaces between the seats and the seats to frame are maintained through out the arc of swing it is felt the issue should be addressed. Refer to manufacturer



5 - Very Low Risk (Finding 1)

Item: Activity Equipment - Multi Play (Junior)
Risk Level: V - Very Low Risk
Manufacturer: Wicksteed Playscapes
Surface: Bark Mulch



Finding: The item has a potential head and neck entrapment in the top spacing of the climbing net. The height of the lower edge of the top rope is 600mm but when the bark settles the entrapment will be above that height
Action: Remove the entrapment



5 - Very Low Risk (Finding 2)

Item: Activity Equipment - Multi Play (Junior)
Manufacturer: Wicksteed Playscapes

Risk Level: V - Very Low Risk
Surface: Bark Mulch



Finding: There are finger entrapments in the shackles of the rope bridge and the item fails to meet the requirements of BS EN 1176:2008 Part 1 4.2.7.6 Entrapment of fingers

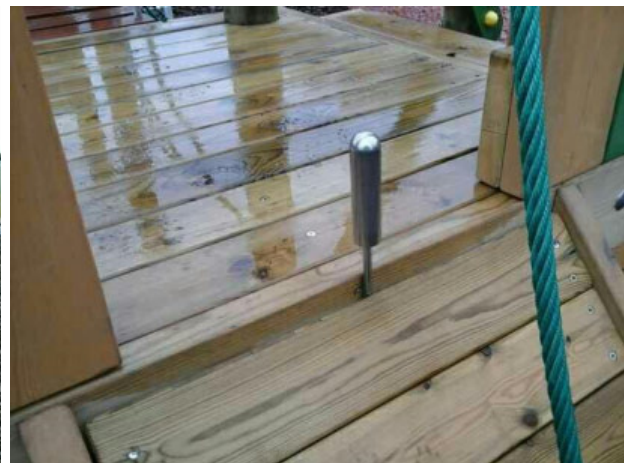
Action: Remove the entrapments



5 - Very Low Risk (Finding 3)

Item: Activity Equipment - Multi Play (Junior)
Manufacturer: Wicksteed Playscapes

Risk Level: V - Very Low Risk
Surface: Bark Mulch



Finding: There is a potential finger entrapment at the top of the angled climber. Although the entrapment sits below the height of 1m it may well pose an issue given the angled climber may in some instances require use of the hands to negotiate

Action: Consider removing this potential point of entrapment